

The Camera

The Cirkut Camera is provided with a focusing screen, allowing the operator to focus accurately and enabling him to see the picture on the ground glass actual size, not alone in width but also in length.

The Cirkut has a firm Rising and Falling Front adjustment. By means of a milled head the front may be lowered or raised and locked in position automatically.

Eastman Daylight-loading Cartridge Film only is used.

SPECIFICATIONS

	No. 10	No. 16
Dimensions of Camera	9 x 12 x 12	11 $\frac{1}{4}$ x 14 $\frac{1}{2}$ x 18
Length of Bellows	27"	39"

PRICE

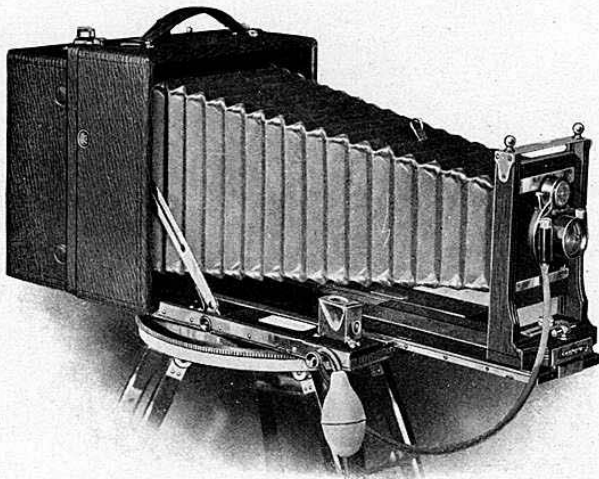
Including Sole Leather Carrying Case for Camera and extra case for Tripod.

Cirkut Camera fitted with Turner-Reich Convertible Anastigmat Lens, Series

II, and No. 4 Century Shutter . \$290.00 \$425.00

Cirkut Camera without Lens or Shutter 240.00 350.00

The Cirkut Panoramic Outfit



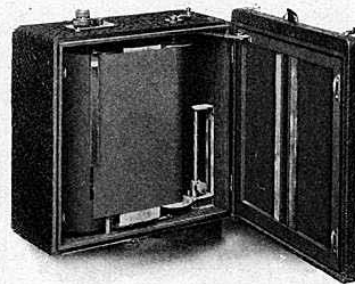
The wonderful success of the original No. 10 and No. 16 Cirkut Cameras has led to the introduction of the smaller No. 6 and No. 8 Outfits,

the former adapted for film 6 $\frac{1}{2}$ inches wide and the latter for 8-inch widths.

The Cirkut Panoramic Outfit is in itself a most complete affair, being made up of a Camera which can be used in the ordinary manner for plates when desired, and a Panoramic Attachment which is easily and quickly attached to the Camera, thus converting it into a Panoramic Outfit. The Attachment in itself is much like an ordinary Cartridge-Roll Holder, in that it is made to use Eastman Daylight-loading Cartridge Film. In addition it contains the mechanism which, when the outfit is in operation, unwinds the film past a slot on a roller, and in so doing exposes it, and at the same time revolves the camera about on an axis, a special tripod and top being furnished. A pressure on the release is all that is necessary to start the motor—another pressure stops it—thus negatives of any desired length up to 6 feet, with the No. 6 and 8 feet with the No. 8, may be made. A complete circle of 360° may be photographed if desired, although, owing to the varying intensity of illumination and direction of light, it is not advisable to attempt 360° negatives unless under exceptionally favorable conditions.

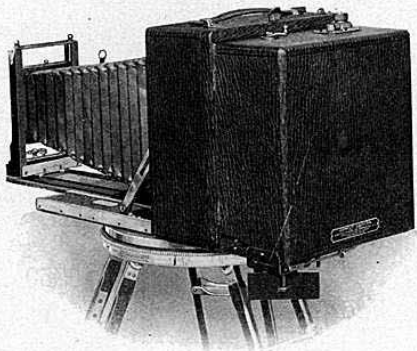
There is an indicator on the top of the film holder showing the exact quantity of film exposed and that remaining unexposed. By another very ingenious arrangement one is enabled to determine before exposure is made, how long a photograph the view decided upon will be.

As with the Cirkut Camera, there is one very important fact relating to Cirkut Outfits that must not be overlooked, and that is their general adaptability. They are not alone Panoramic Outfits.



Cirkut Attachment

They are more. With them one is not limited as to size of the photograph to be made. The camera is loaded with a roll of film 3 feet or 6 feet long, as may be desired, and a succession of exposures, one after the other, of whatever length the operator may determine, made by merely starting and stopping the motor until the roll of film has all been exposed. Then additional rolls may be loaded in broad daylight. With the No. 6, photographs 6½ inches wide and any length up to 6 feet may be made, and with the No. 8, 8 inches wide and any length up to 8 feet, all on Eastman Daylight-loading



Cirkut Attachment Fitted to 5 x 7 Century Camera

Film. Compare this operation with that of the operator who goes out with the conventional 6½ x 8½ or 8 x 10 view camera, and the necessary quota of glass plate and other paraphernalia, and then the conventional 6½ x 8½ or 8 x 10 photographs only can be secured.

Eastman Daylight-loading Film only is supplied for all Cirkut Apparatus.

In addition to the Panoramic Outfit, either Cirkut No. 6 or No. 8 provides an equipment which permits of its use as a regular hand camera for plates when so desired, and while the camera is adapted for Panoramic work, by removing the Attachment a revolving ground glass back is provided which may be easily fitted, thus converting the outfit into a revolving back plate camera. With the No. 6, the camera is a 5 x 7, the No. 8, 6½ x 8½.

The camera has a double-section brass-bound telescope bed, swing-back and bed rack and pinion movements, extra bellows length, and is in every way up to the Century standard.

The lens regularly supplied is the Centar Series II, with Century No. 1 Automatic Shutter.

A double plate holder, a Crown Tripod, (the best tripod made) complete the outfit. There is nothing in the entire field of photographic apparatus which for completeness is in any way comparable with the Cirkut Panoramic Outfit. *Cirkut Outfits No. 6 and No. 8 will be sold complete only.*

SPECIFICATIONS

	No. 6	No. 8
Width of Photograph	6½"	8"
Dimensions of Camera	8⅞ x 4⅜ x 8½	10⅝ x 4⅜ x 10½
Weight of Camera	5⅝ lbs.	8½ lbs.
Dimensions of Camera with Attachment	8⅞ x 8 x 8½	10⅝ x 8½ x 10½
Weight of Camera with Attachment	9 lbs.	14 lbs.
Length of Bellows	17 inches	21 inches

PRICES

Cirkut Panoramic Outfit including Century Camera, Series II Centar Lens, No. 1 Automatic Shutter and Panoramic Attachment, also Removable Revolving Back and Double Plate Holder for Camera, Tripod and Carrying Cases to hold complete equipment. No. 6 \$112.50, No. 8 \$175.00.

No. 6 Cirkut Outfit with B. & L. Zeiss-Protar Series VIIa, No. 9.....\$196.00
 No. 8 Cirkut Outfit with B. & L. Zeiss-Protar Series VIIa, No. 12.....\$283.00

Cirkut Film

Only Eastman Film is supplied for the Cirkut Camera. This film is furnished in Daylight-loading Cartridges.

Width—Inches	Length—Feet	Price -Roll
6	10	\$ 2.40
6	20	4.80
6½	3	.80
6½	6	1.60
8	4	1.30
8	8	2.60
8	10	3.20
8	20	6.40
10	10	4.00
10	20	8.00
12	10	4.80
12	20	9.60
16	10	6.40
16	20	12.80